



The API Newsflash

News and Information from API Alliance

SUMMER 2022



What Has API Been Up To?

We've been busy during the pandemic! And because travel and "visits" have been so limited for all businesses over the past 2 years, we'd like to update you on the facility changes that we've recently completed, since you've either never been here or it's just been too long since you stopped by.

The "COVID ERA" has certainly created new and interesting challenges for all businesses and our battle was not unique. We've all faced component and raw material availability challenges, and lead time issues. We are proud of how our team has taken that challenge and battled through. While it was never perfect, our procurement and engineering team bonded together to be creative in alternative and 'design around' solutions. We want to acknowledge and thank them for always trying to go above and beyond!

While working through these uncertain times, we also took some time to rearrange and expand our capabilities. New to our ATI campus (Adaptek Systems, API Alliance, Automated Laser, Northern Apex, and OakTree) is our 5th building. We moved our Northern Apex RFID/barcode and asset tracking solutions team out of the API Alliance building and into this new building, directly south of API. They have expanded offices, testing and showcase lab, and corporate meeting rooms and occupy about 25% of the

building. This freed up space for the needed expansion of production, lab and office space for API engineering and software teams.

In addition to our current building, API now occupies approximately 25% of the new building, which includes all palletized stock and provides expanded warehouse capacity that includes our larger volume on hand component storage. This still leaves an additional 50% of the new building open and available for future production and assembly growth. Through this expansion process, we also greatly increased our parking capacity. This was desperately needed because of our growth over the past 3 years, combined with the expected new growth allowed by the expanded facilities.

API kept a portion of our previous stock area for parts that are used on a daily basis and relocated that to a more convenient location near our circuit board assembly area. The reorganization freed up some existing manufacturing space which allowed the automated surface part assembly and thru hole component automated flow solder area to be available for additional new, duplicate and replacement equipment growth. We hope to have this in place by the end of 2022. Our cable prep, epoxy and conformal coat areas were relocated and consolidated which helps improve overall product flow. And finally, we relocated some key production lines to the vacated warehouse area to allow for expanded circuit board, motor controls and box build assembly to have more efficient flow.



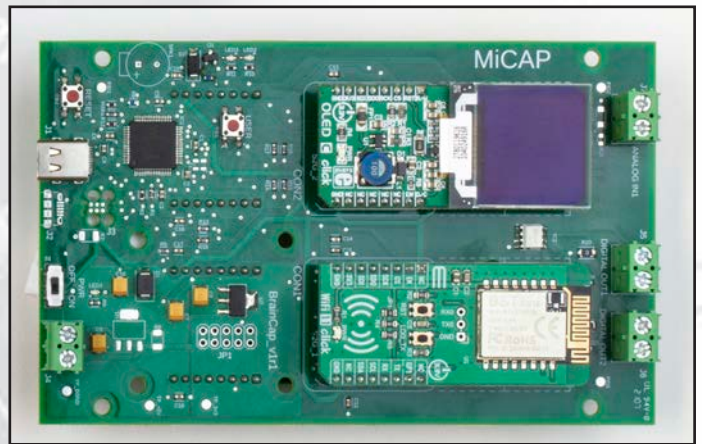
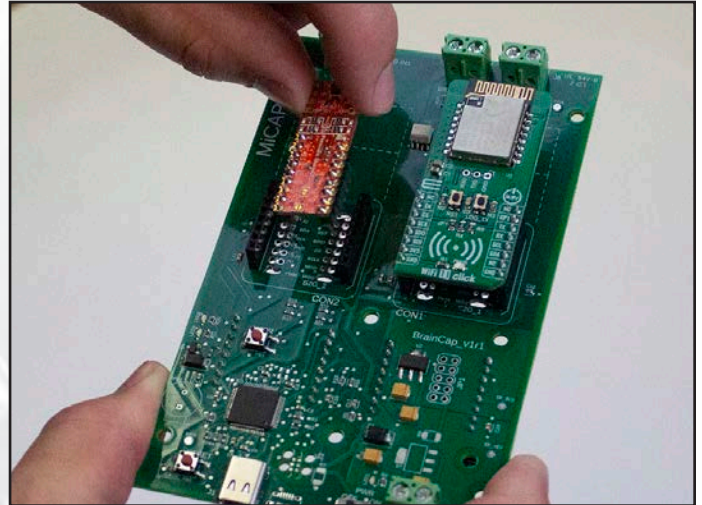
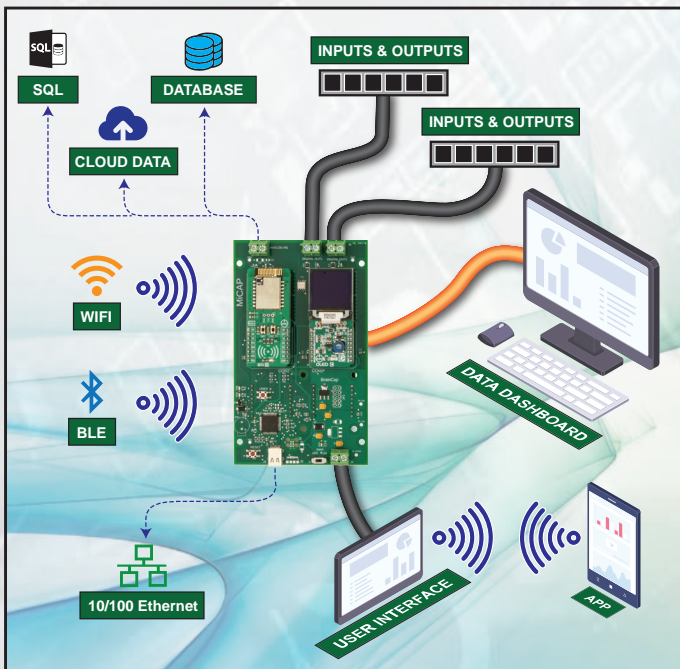
AMERICAN MADE

LEARN MORE BY VISITING: www.apialliance.com | OR CALL TO DISCUSS YOUR PROJECT: (260) 637-2739

Copyright © API Alliance, 2022.

Engineering Spotlight

Did you know that API has a new custom controls development platform available to update your existing or new control needs? When you work with API's electronic design and software group, the process does not need to start with a "blank sheet of paper." Utilize our existing platform to customize the specific needs for your control, configure it to a size that matches your product needs and compile the controlling software to be unique and "owned" by your product model.



Introducing The Modular Intelligent Controller Assembly Platform (MiCAP)

M-Series (Microcontroller Based)

Use Our Programmable Process Controller as Starting Points for Semi-Custom Boards and Save Money on R&D

- Modular Design Allows for More Flexibility
- Add as Much or as Little to Your System as You Require
- Add Connectivity to Your Current Projects Without a Complete Redesign

If you are contemplating a design or controller, or need to quickly test out some functionality, this plug and play add on technology allows you to configure a controller on the fly in a short period of time to test out your specific design needs. If your volume is small continue to use as is. If your volume requires it, you can springboard this quick development tool into

a specifically designed controller. You can omit what is not needed and include the feature functionality you specifically require in the size and shape that fits your exact needs. Get there QUICKLY with MiCAP.

What else can API design and software engineering provide?

- Interconnectivity
- Wireless Solutions (WiFi, Bluetooth, etc.)
- Phone Apps
- We offer product enhancements
- And a whole lot more at www.apialliance.com

Most importantly we want to thank you for being a valued customer! API is built to be an expansion of your production and engineering departments. We do not take that lightly and want to continue to be in a position to serve. Let us know where and how we can continue to improve our services and team!



AMERICAN MADE

LEARN MORE BY VISITING: www.apialliance.com | OR CALL TO DISCUSS YOUR PROJECT: (260) 637-2739

Copyright© API Alliance, 2022.

Meet Some of the Team

And Meet Our Newest Team Member:



Lisa Chapman

Lisa Chapman was hired in September 2021 to the position of Purchasing and Procurement. Her background includes multiple office positions and responsibilities including Receptionist, Accounts Payable, Administrative Assistant, Purchasing Clerk and Data Entry. Lisa has an associate degree in Business Management from Indiana Tech. She is responsible for circuit board and component purchasing and procurement planning. She is also being cross trained to back up multiple office functions. She enjoys movies, reading and spending time with family and friends. Her hobbies include walking her beloved beagle (Sadie) and 4-wheeling with her Jeep Club Family. Lisa has two stepdaughters, one stepson and one step-grandson with her fiancée, Tony, as they plan to be married in 2022!

Expanding Software Support:



Andy Hobbs

Andy Hobbs has recently moved from the Northern Apex software team to the API Alliance software team. Andy brings 18 years of experience working on API and Northern Apex software projects as well as handling IT-related support for us. As Senior Software Developer, he is here to help deploy customer projects at all levels of software development. He is part of the MICAP roll out team and is available to consult and work on any level of software project you may have. He joins the other 5 API software engineers to help meet our customers' needs. Andy enjoys spending time with his family, and being involved in helping his church with technology support. With four young children, family life absorbs most of Andy's time when he is not at work.

Learn More About API: Capabilities Overview Video



Learn more about our assembly and production capabilities.

To watch the video scan the QR code above with your smartphone or visit: www.apialliance.com/video.html



Production Support:



Chris VanHouten

Chris VanHouten arrived at API in 2018 and holds the position of Electrical Engineering Technician for Production Equipment and Test support. Chris has over 18 years' experience in Electronic and Production Equipment repair, maintenance, and programming, as well as circuit board level troubleshooting. In addition to his manufacturing engineering support of our production floor, Chris mentors our engineering student interns on troubleshooting and testing of our PCB assembly as well as programming and supporting our Assembly Equipment. As Facilities Lead he works to keep all things operational and functioning throughout the building, performing routine maintenance as necessary. He enjoys spending quality time with his family and friends, restoring and repairing automobiles, and playing the guitar and other instruments.

Production Floor Leadership and Support:



Josuel Larrazabal

Josuel Larrazabal joined API in 2018 and is currently a group lead over seven employees as he also helps mentor our engineering students. His principal areas of responsibility include our electro-mechanical build and assembly, box builds, panel fabrication, wiring, and assembly as well as organization of our shipping and receiving area and additional warehouse facility. Josuel assists in all things facility related to keep operations functioning and performs routine maintenance as required periodically. Josuel enjoys the outdoors, being creative and spending time with his family.



AMERICAN MADE

LEARN MORE BY VISITING: www.apialliance.com | OR CALL TO DISCUSS YOUR PROJECT: (260) 637-2739

Copyright © API Alliance, 2022.

Manufacturing & Engineering Services Overview

Your Partners in Electronics Design, Engineering and Production

API Alliance is Ready to Serve All of Your Contract Manufacturing Needs

Manufacturing

- Electronic Assembly
- Mechanical Assembly
- Turnkey Product Manufacturing

Design

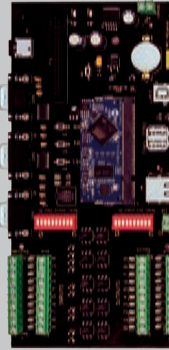
- Electronic Design Services
- Software Development
- Product Enhancements

Assembly Capabilities

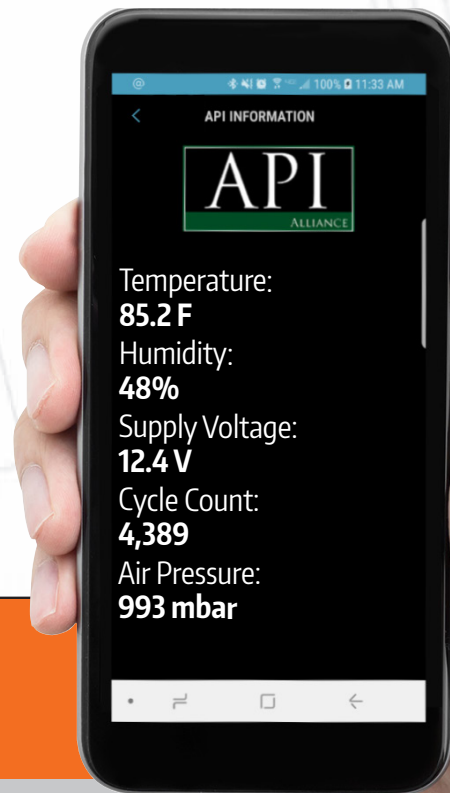
- SMT Circuit Board Assembly
- Through Hole Circuit Board Assembly
- Electro-Mechanical Assembly
- Programming and Testing
- Potting and Conformal Coating Capabilities

Did You Know?

API Offers Quick Start Platforms For Process Controllers



1. Start with our base platform
2. Add or subtract the technologies, I/Os, and functionality for your particular application
3. Save time and design costs by not starting with a 'blank piece of paper'
4. Own your specific design for your specific application



Add Wireless or Wired Connectivity to your Current or Future Products

In today's marketplace customers expect and look for connectivity in the products they use. Your equipment doesn't have to be new, sophisticated or expensive to connect to the Internet of Things (IoT). Get your devices talking: device to device connectivity, send and receive data to and from the cloud, reporting and control for products via smart phones, tablets or other Bluetooth enabled devices. Now you can add sensing capabilities to monitor temperature, pressure, humidity, acceleration, motion, impacts, and more, and access that data remotely.



WiFi

Monitor equipment in your facility within your WiFi network.



RF

Connect with wireless RF to control your current device or product.



CELLULAR

Have your process call or text you with updates and alerts.



BLUETOOTH

Reporting and control on your phone, tablet, or other Bluetooth enabled device.



AMERICAN MADE

LEARN MORE BY VISITING: www.apialliance.com | OR CALL TO DISCUSS YOUR PROJECT: (260) 637-2739

Copyright © API Alliance, 2022.